

Picker

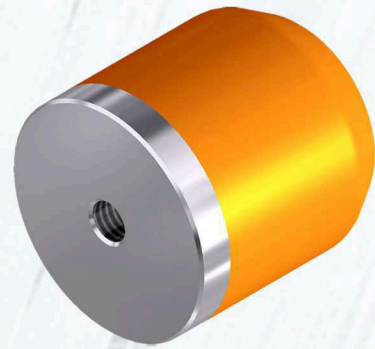
- *Cost reduction due to long life materials*
 - *Marin Vulcollan® Picker since 1996*
- *Especially designed for heavy weight weaving*



Picker type A

Energy storer device, used as interface during the acceleration and deceleration process of the shuttle.

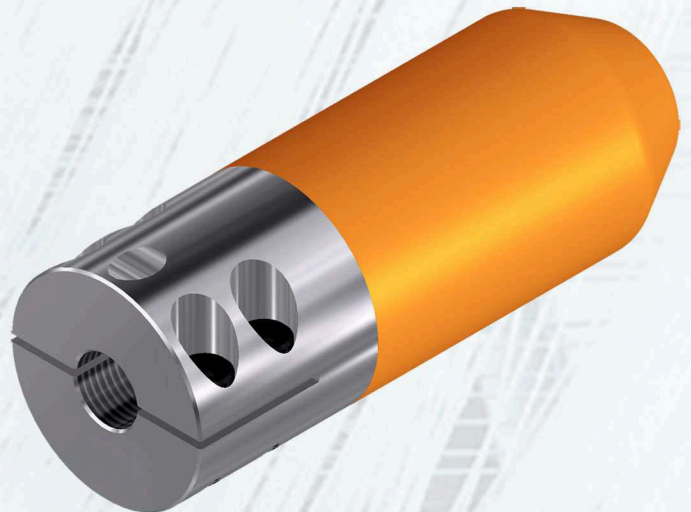
Dimensions: Diameter = 40 mm, length = 42 mm, with internal thread M8. Used on Looms with THS-B hydraulic picking units equipped with piston rods with conical-head adapter support and internal thread.



Picker type B

Energy storer device, used as interface during the acceleration and deceleration process of the shuttle.

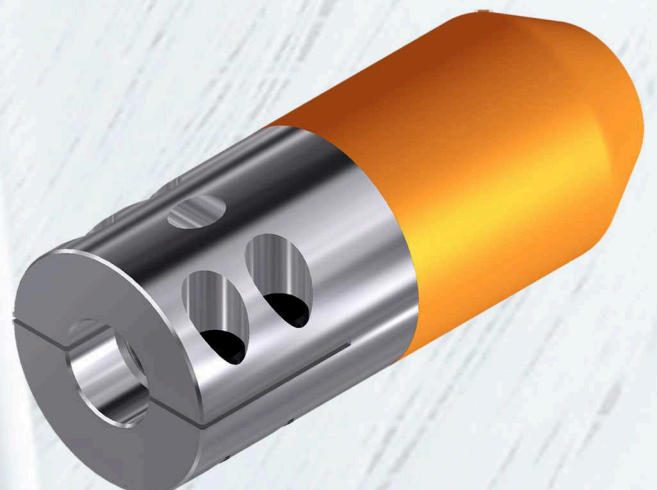
Dimensions: Diameter = 45 mm, length = 124 mm, with internal fine thread M16 x 1,5 mm. Used on Looms with HP I & HP II hydraulic picking units.



Picker type CM

Energy storer device, used as interface during the acceleration and deceleration process of the shuttle.

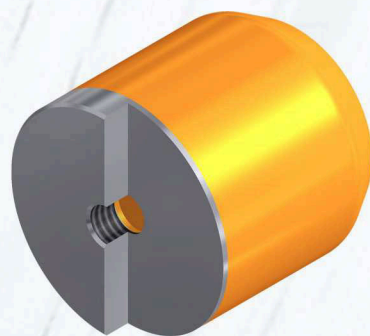
Dimensions: Diameter = 45 mm, length = 115 mm, with internal fine thread M18 x 1.5 mm and fit 19H7. Used on Looms with THS-B hydraulic picking units equipped with piston rods with external thread and 19H7 fit.



Cross section Picker type A

Dimensions:

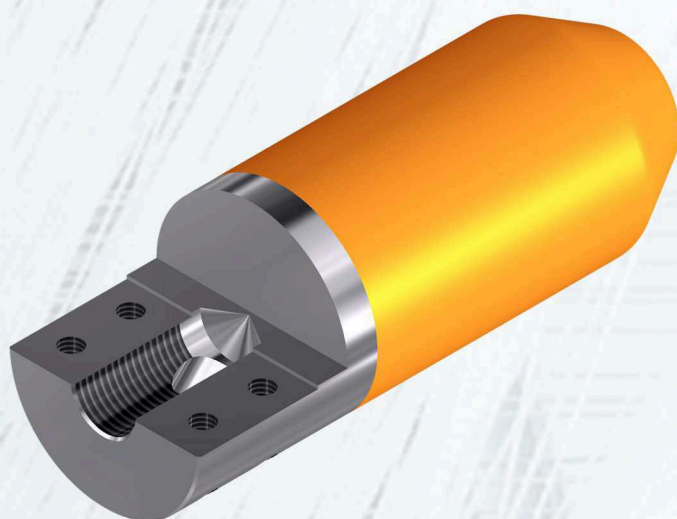
Diameter = 40 mm, length = 42 mm,
with internal thread M8.



Cross section Picker type B

Dimensions:

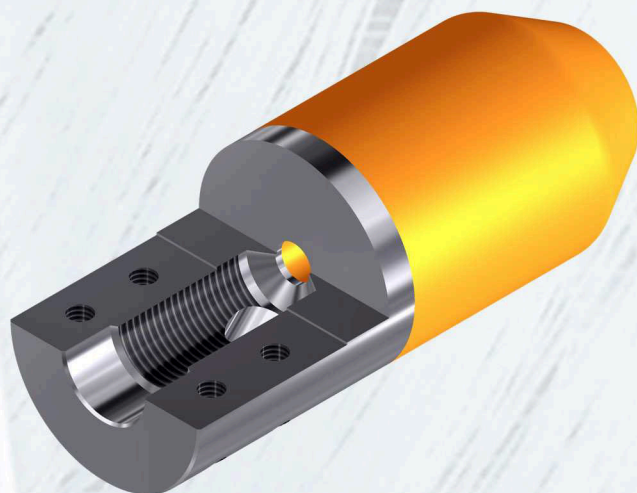
Diameter = 45 mm, length = 124 mm,
with internal fine thread M16 x 1,5 mm.



Cross section Picker type CM

Dimensions:

Diameter = 45 mm, length = 115 mm,
with internal fine thread M18 x 1,5 mm and fit 19H7.



MARIN
Industrietechnik

Lechstrasse 2
73529 Schwäbisch Gmünd
Germany

fon: + 49 (0) 7171 98 90 52
fax: + 49 (0) 7171 98 90 53

email: info@marin-technik.de
home: www.marin-technik.de